



On Another Level SM

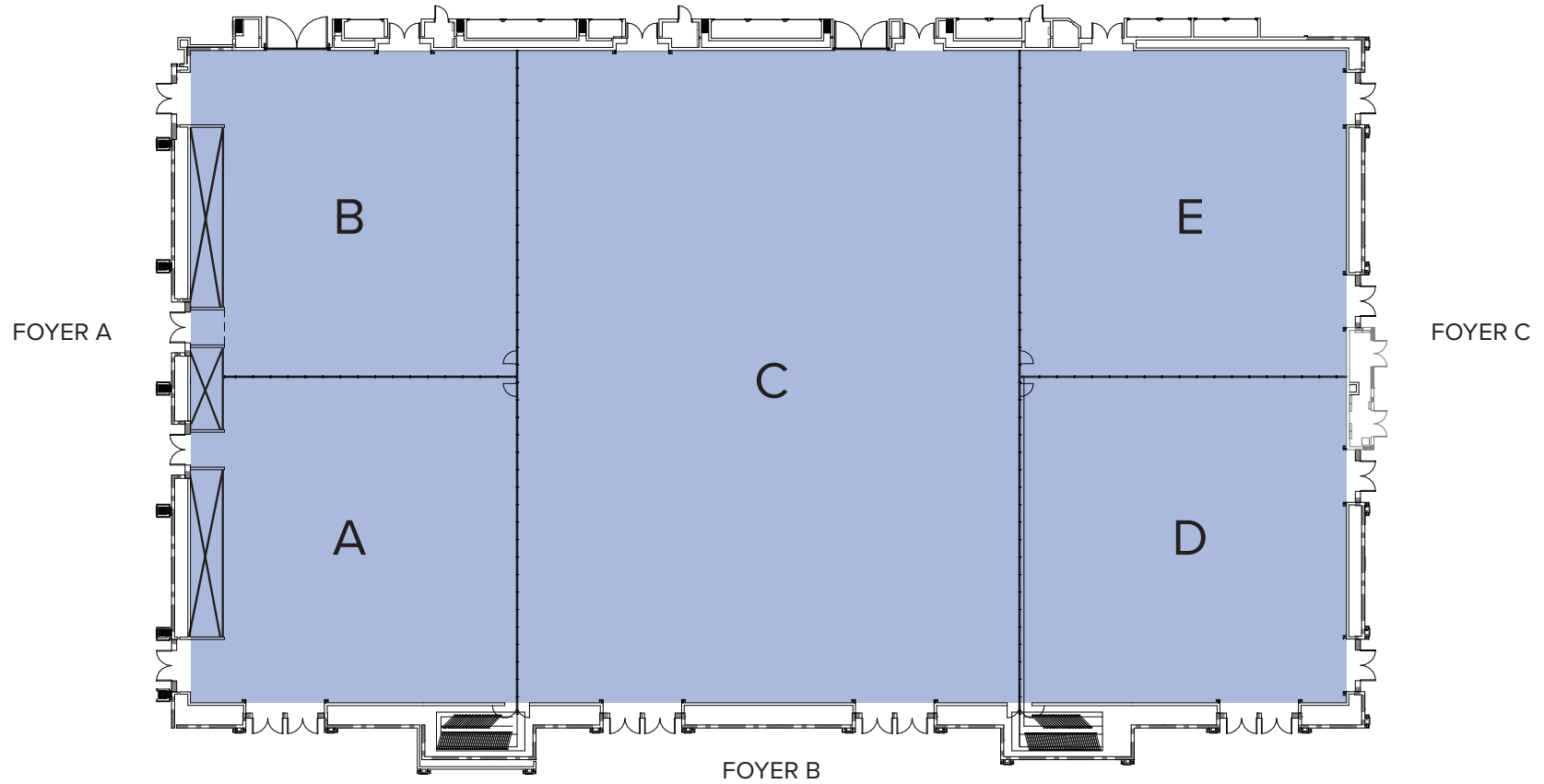
Pechanga.com



PECHANGA
RESORT CASINO.

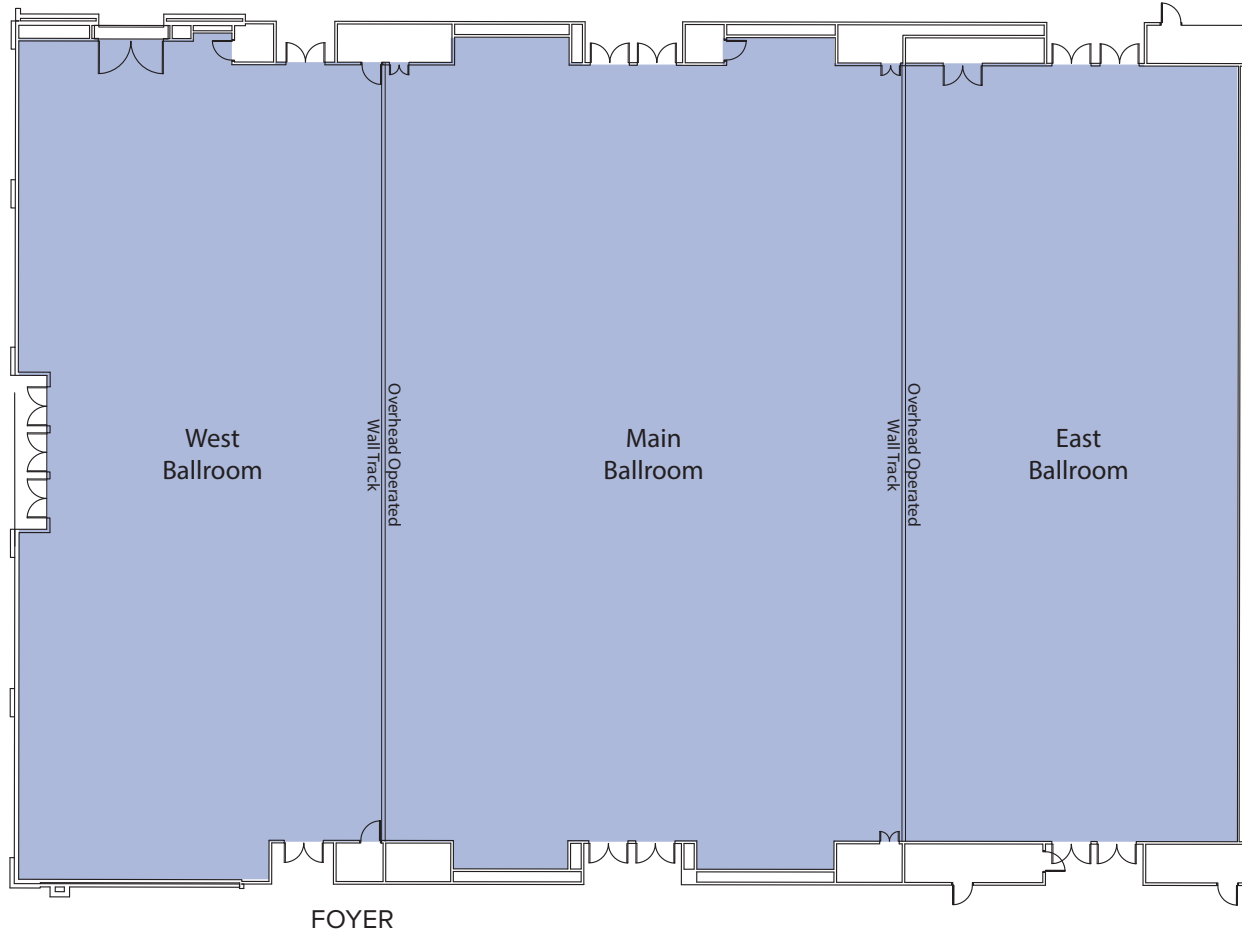
SUMMIT BALLROOM

First Floor



| Room Name | Total Sq. Ft. | Room Size | Ceiling Height | Classroom | Theater | Banquet 10 | Reception | Conference | U-Shape | H-Square | 10'x10' |
|-----------------|---------------|-----------|----------------|-----------|---------|------------|-----------|------------|---------|----------|---------|
| Ballroom A | 5,235 | 75 x 69 | 30' | 218 | 748 | 349 | 524 | 125 | 150 | 125 | 26 |
| Ballroom B | 5,235 | 75 x 69 | 30' | 218 | 748 | 349 | 524 | 125 | 150 | 125 | 26 |
| Ballroom A&B | 10,470 | 150 x 69 | 30' | 436 | 1,496 | 698 | 1,048 | 250 | 300 | 250 | 52 |
| Ballroom C | 17,250 | 150 x 115 | 30' | 715 | 2,464 | 1,150 | 1,719 | 412 | 491 | 412 | 86 |
| Ballroom D | 5,654 | 75 x 75 | 30' | 235 | 808 | 377 | 565 | 135 | 162 | 135 | 28 |
| Ballroom E | 5,634 | 75 x 75 | 30' | 235 | 805 | 376 | 565 | 135 | 162 | 135 | 28 |
| Ballroom D&E | 11,288 | 150 x 75 | 30" | 470 | 1,613 | 753 | 1,130 | 270 | 324 | 270 | 56 |
| Ballroom ABC | 27,720 | 150 x 184 | 30' | 1,181 | 3,960 | 1,848 | 2,836 | 681 | 811 | 681 | 138 |
| Summit Ballroom | 39,008 | 150 x 260 | 30' | 1,646 | 5,573 | 2,601 | 3,954 | 949 | 1,131 | 949 | 194 |

BALLROOM



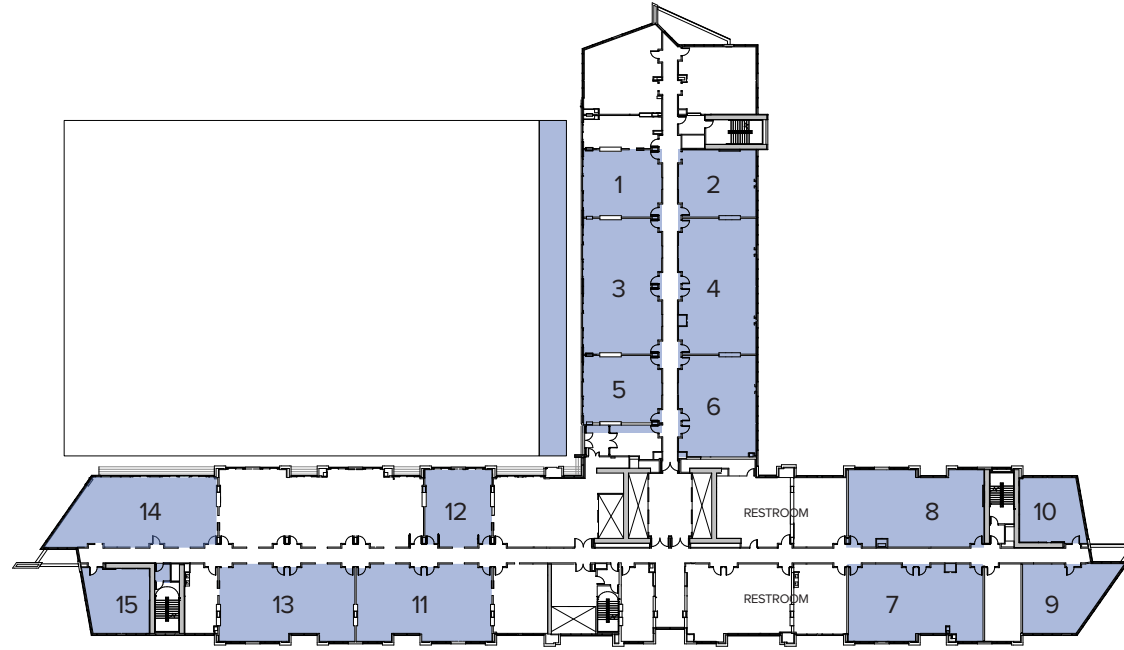
| Room Name | Total Sq. Ft. | Room Size | Ceiling Height | Classroom | Theatre | Banquet 10 | Reception | Conference | U-Shape | H-Square | 10'x10' |
|----------------------|---------------|-----------|----------------|-----------|---------|------------|-----------|------------|---------|----------|-----------------|
| Grand Ballroom West | 6,254 | 53 x 118 | 20' | 378 | 893 | 417 | 480 | 120 | 110 | 132 | See note Below. |
| Grand Ballroom Main | 11,288 | 75 x 118 | 20' | 504 | 1,613 | 753 | 700 | 148 | 130 | 152 | See note Below. |
| Grand Ballroom East | 6,254 | 53 x 118 | 20' | 378 | 893 | 417 | 480 | 120 | 110 | 132 | See note Below. |
| West & Main Ballroom | 17,542 | 128 x 118 | 20' | 882 | 2,506 | 1,169 | 1,180 | 268 | 240 | 284 | See note Below. |
| Main & East Ballroom | 17,542 | 128 x 118 | 20' | 882 | 2,506 | 1,169 | 1,180 | 268 | 240 | 284 | See note Below. |
| Grand Ballroom | 21,476 | 182 x 118 | 20' | 1,240 | 3,068 | 1,432 | 1,700 | 388 | 350 | 416 | See note Below. |

Additional Stewart screen on east wall.

All Ballrooms have: multiple Internet/Data and Telephone access points, wireless internet capabilities, 10.5' x 14' Stewart Tension Screens on the north wall, combinable house sound system (speakers in ceiling), CATV access, wired and wireless microphone access, and remote wall panel controls for the following racked equipment: VHS, DVD, CD/Cassette, DAT, and satellite music. See A/V department for details and setup options.

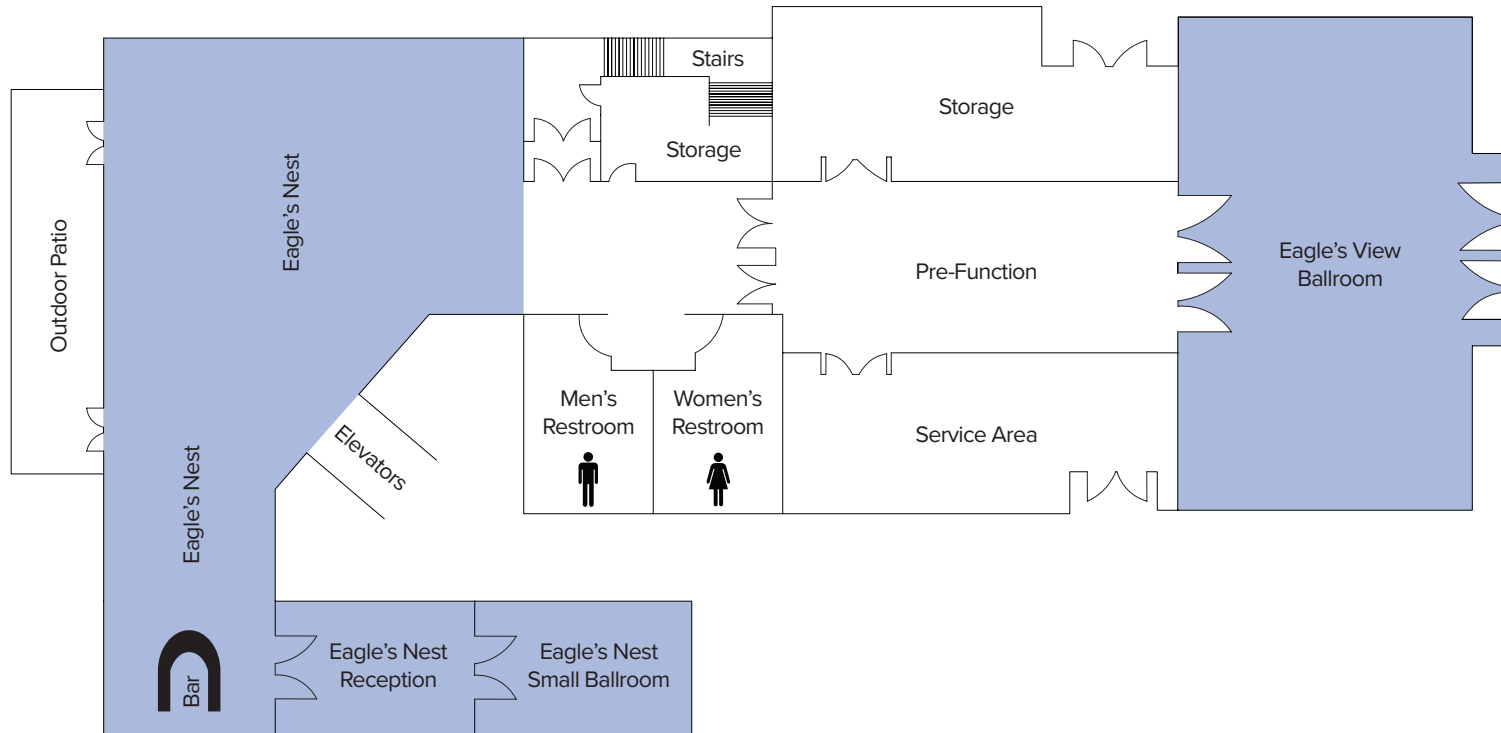
MEETING SPACES

Second Floor



| Room Name | Total Sq. Ft. | Room Size | Ceiling Height | Classroom | Theater | Banquet 10 | Reception | Conference | U-Shape | H-Square |
|-----------------------|---------------|-----------|----------------|-----------|---------|------------|-----------|------------|---------|----------|
| # 1 - Sumac | 768 | 28 x 27 | 11' | 32 | 85 | 64 | 77 | 18 | 22 | 18 |
| # 2 - Tule | 774 | 28 x 28 | 11' | 32 | 86 | 64 | 77 | 19 | 22 | 19 |
| # 3 - Elderberry | 1,440 | 26 x 55 | 11' | 60 | 160 | 120 | 144 | 34 | 41 | 34 |
| # 4 - Cottonwood | 1,575 | 28 x 55 | 11' | 66 | 175 | 131 | 158 | 37 | 45 | 37 |
| # 5 - Manzanita | 1,004 | 28 x 36 | 11' | 42 | 111 | 84 | 100 | 24 | 29 | 24 |
| # 6 - White Sage | 1,295 | 28 x 46 | 11' | 54 | 144 | 108 | 130 | 31 | 37 | 31 |
| # 7 - Rabbit | 1,523 | 28 x 54 | 11' | 63 | 169 | 127 | 152 | 36 | 44 | 36 |
| # 8 - Red Tailed Hawk | 1,528 | 29 x 53 | 11' | 64 | 170 | 127 | 153 | 36 | 44 | 36 |
| # 9 - Deer | 727 | 26 x 28 | 11' | 30 | 81 | 60 | 73 | 17 | 21 | 17 |
| # 10 - Turtle | 653 | 26 x 25 | 11' | N/A | N/A | N/A | N/A | 20 | N/A | N/A |
| # 11 - Fox | 1,527 | 28 x 55 | 11' | 64 | 169 | 127 | 153 | 36 | 44 | 36 |
| # 12 - Road Runner | 604 | 23 x 26 | 11' | 25 | 67 | 50 | 60 | 14 | 17 | 14 |
| # 13 - Bear | 1,544 | 28 x 55 | 11' | 64 | 171 | 128 | 154 | 37 | 44 | 37 |
| # 14 - Coyote | 1,464 | 23 x 64 | 10.5' | 61 | 163 | 122 | 146 | 35 | 42 | 35 |
| # 15 - Mountain Lion | 658 | 25 x 26 | 11' | 27 | 73 | 55 | 66 | 16 | 19 | 16 |

EAGLE'S NEST



| Room Name | Total Sq. Ft. | Dimensions | Theater | Classroom | Plated | Buffet | Reception | U-Shape | Hollow Sq. | Conference | Existing A/V |
|-----------------------------|-----------------------------|------------|---------|-----------|------------|------------|-----------|---------|------------|------------|--|
| Eagle's Nest Reception | 736 | 32 X 23 | 54 Max | 32 Max | 50 Max | 40 Max | 60 Max | 20 Max | 24 Max | 24 Max | Big Screen TV |
| Eagle's Nest Small Ballroom | 780 | 30 X 26 | 60 Max | 40 Max | W/D 30 Max | W/D 20 Max | 24 Max | 30 Max | 32 Max | 34 Max | Big Screen TV |
| Eagle's Nest | N/A | N/A | N/A | N/A | 160 Max | 160 Max | 220 Max | N/A | N/A | N/A | Satellite Music, Music Video System, House Sound (speakers in ceiling) |
| Eagle's View Ballroom | 2640 | 65 X 41 | 280 Max | 196 Max | 220 Max | 170 Max | 200 Max | 62 Max | 76 Max | 76 Max | *See note below |
| Eagle's Nest Balcony | Existing 64 Balcony Seating | | | | | | | | | | |
| Pool | N/A | N/A | N/A | N/A | 280 Max | N/A | 250 Max | N/A | N/A | N/A | N/A |

* Equipped with house sound system (speakers in ceiling). Two A/V panels, each with up to (2) microphone inputs, up to (2) line level inputs, (1) CATV feed, and multiple Data/Internet and phone access points. Two in-room touch panels with volume control, 6'x8' Stewart screen and shade/curtain control, and wireless internet capabilities. Audio and video access to following racked equipment (not in-room): VHS, DVD, CD, Satellite music, Cassette.

PECHANGA THEATER

